



www.shiprite.net

info@shipritesoftware.com

Update v. 10.18.2

This Update must be installed by ASAP.

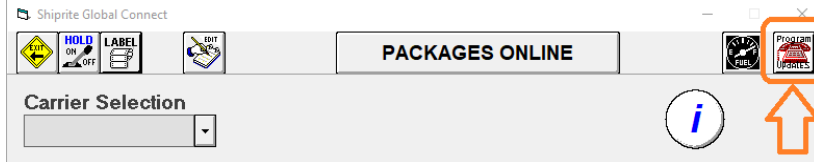
Overview

- Time to Download: 10-20 Seconds.
- Time to apply update: 2-5 minutes.
- It is recommended you download and install this update at the end of day, and not as you arrive for work, unless you get to the center at least 30 minutes ahead of time.

- This update resolves the problem of ShipRite displaying the wrong rate/zone and miscalculating the postage when shipping to some APO/FPO zip codes.
- Added Option to select store or customer address as the FROM address for DHL International shipments.
- Numerous bug fixes. (Please check the last page of this document for details)

Installation

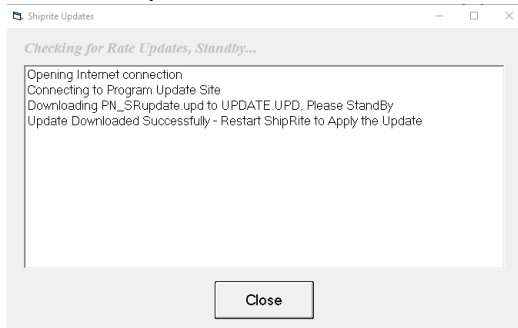
1. Backup your ShipRite database. You should be backing up DAILY. If you are not, please go to www.shipritesoftware.com/FAQS, download the “Backup ShipRite” instructions, and then apply the backup procedure.
2. The Update has to be done on the server computer with ShipRite closed on all other workstations.
3. On the server, from the main ShipRite screen, click on the EOD button. In the top right corner, click on the Program Updates button.



(Note: If Program update button does not work, go to page 3 of this document to manually download the update)

4. A ShipRite Updates status screen will display with information that the update is being downloaded. Depending on your internet speed, this can take a few minutes to complete.

When done, a message will display informing that the Update downloaded successfully. Close the screen and close out of ShipRite completely.



5. After closing ShipRite, open it right back up from the desktop shortcut. During the initial startup, a message will appear stating the Program Update has been located. Click YES to install the update.

Follow any prompts on the screen to complete the Update installation, including the installation of the ShipRiteNet 3.5 module. Close when done.

If prompted to repair or remove ShipRiteNet 3.5, select Repair.

6. Immediately after the installation of the ShipRiteNet 3.5 module, a prompt will come up to install the ShipRiteNet 4.5 module. Follow the prompts to install it as well.

If prompted to repair or remove ShipRiteNet 4.5, select Repair.

7. After the installation is completed, start ShipRite back up from your normal icon. The first time ShipRite is started up, the software will go through a loading procedure. This is normal.

The update is now completed.

Workstations

After the server is updated, start ShipRite on any additional workstation that is present. The first time ShipRite is started up, a pop up message will appear (“Failed to Load ShipRiteNet module”). Press YES on that pop-up dialog and follow prompts on the screen to install the current ShipRiteNet module.

If prompted to repair or remove ShipRiteNet 3.5 and/or 4.5, select Repair.

In the event the Program Update button fails to download the update:

It’s possible that a firewall or anti-virus software blocks the Program update from being downloaded. If that is the case follow these instructions:

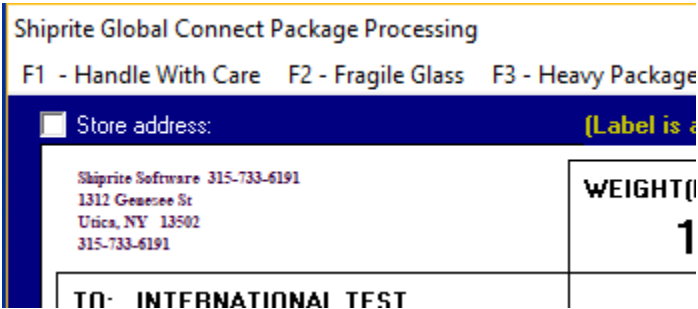
1. Click [<<HERE>>](#) to manually download the US update.
(Canadian Locations, please click [<<HERE>>](#) to download the Canadian Update)
2. SAVE to your desktop. Double click on the file name: SRUpdate_10.18.2.exe
3. Click NEXT to start the loading process, then FINISH to complete the installation.
4. Next you will receive messages that the ShipRite Dot Net 3.5 and 4.5 need to update. Go ahead and click YES and continue until done. Click CLOSE when done. If prompted to Repair or Remove, select Repair.
5. Start the ShipRite Program from the normal icon. You will get a message that X number of Database fields were added. This is normal. You will be required to restart the program again.

Once the ShipRite Main Menu screen pops up, you are updated.

DHL International – From address toggle option

After selecting a DHL Service in ShipOne, in the print label screen, before clicking “Go Online Now”, check the “Store Address” box in the top left corner to use the Store address as the FROM address on the shipping label.

If that box is unchecked, then the customer’s address will print on the label.



Fixes Included in 18.2

Fixed/New Items:		
Type	Module	Description
Fix	EOD	UPS EOD upload groups different packages into one shipment.
Fix	ContactSearch	Cell phone provider 'Virgin Mogile USA' should be 'Virgin Mobile USA'.
Fix	Coupons	Promotion type 'Compeditor' should be 'Competitor'.
Fix	POS	Bottom context menu option "View Invoices for This Customer" removed. Clicking the "Invoice Lookup" button does this.
Fix	POS	POS Line Editor: When editing packages make sure line edited is not incorrectly a note line due to line mismatch.
Fix	POS	Recovered invoice should show tax info related to invoice, not the account's default tax info.
Fix	AutoPayments	If monthly auto payment on account fails then wrong AR info is used in inserted payment record.
Fix	POS	Recovered invoice re-calculates tax without coupon discount.
Fix	USPS	USPS First Class packages should be limited to L+G=108 inches.

Fix	ShippingRates	If applying .upd rate update to USMail_Zones.mdb, error occurs due to trying to update nonexistent FirstClass table.
Fix	Net.PackMaster	Set "Print Details on Receipt" checkbox to Checked by default.
Fix	Net.CommonShip	USPS tracking# of 30 chars in length needed to be truncated.
Fix	Net.ShipRiteReports	Can Origin: Invoice report doesn't print SoldTo info at all.
New	USPS	Processing of global domestic zone lookup text files added so individual .mzn files no longer necessary.
Fix	QBO	Round journal entry values to 4 decimal places instead of 2 to prevent issue where entry off balance by .01 due to coupons allocation.
Fix	Startup	After fuel surcharges updated, old fuel surcharge percentages are used until shiprite is restarted.
New	Purolator_Zones.mdb	BeyondListCodeLookup updated with 2018 Q2 Beyond Point list effective 4/1/2018.
Fix	AR	Error occurs when loading/saving AR account with AccountName containing apostrophe when Statement Name blank.
Fix	Manager	If user opens drawer > completes no sales > restarts SR > closes drawer, then runtime error 91 (object variable not set) occurs.
Fix	POS	Don't include inhouse "CASH" account sales in account-related production, sales, tax reports.
Fix	Shipsurance	Shipsurance API test/live endpoints updated.
Fix	Shipsurance	In Shipsurance API request, encode/escape querystring parameters to prevent possible data related errors.
Fix	Setup	POS Departments: Don't automatically save Department Name in all uppercase when saving department changes.
Fix	Manager	If SmartSwiper swiped refund fails, refund still recorded in shiprite database as if successful.
Fix	AutoPayments	Monthly auto payment on account will try to process payment on account with balance less than \$0.01.
Fix	Manager	If select 'no' when prompted to confirm SmartSwiper refund amount, refund still recorded in shiprite database as if successful.
Fix	AutoPayments	Cayan Vault payment status returns as successful when payment actually fails due to invalid expiration date on saved card.
Fix	AutoPayments	When monthly autopay applied to acct for first time, adds adjustment records to balance past invoices which causes drawer to show unexpected AR-related payment data for that day/closing.
Fix	ShipMaster	Allow user to enter LxWxH dimensions in decimals to the nearest hundredth of an inch.

Fix	USPS	USPS Cubic Rate pricing should be calculated using dimensions rounded down to the nearest 0.25 inch.
Fix	QBO	QBO ChartOfAccounts .upd file processing causes crash in some cases due to db field containing too much data.
Fix	DHL	"Use Store Address" checkbox option added to DHL label preview to allow user to use either store or customer shipper address on label.
Fix	DHL	Ship package as "DOX" if shipping via DHL Docs service or Documents Only selected in Customs form.
Fix	Reports	MBX key deposits should be included in z-report.
Fix	PricingMatrix	DHL services not marking up from PricingMatrix entries for 'DHL-INT', 'DHL-INT-DOC' as expected.
Fix	Shipping	FedEx, UPS: Declared value charge is miscalculated and resulting charge is greater than expected.
Fix	USPS	USPS Express Intl Letter incorrectly uses 1 lb price instead of 0.5 lb price for letter <= 0.5 lb.
Fix	Shipping	FedEx: DAS surcharge is automatically added when quoting Intl residential package with only country specified.
Fix	ContactSearch	Duplicate names show in auto-complete quick search list.
Fix	POS	MBX rental/renewal transactions that are taxed don't allocate taxes properly in the database.
Fix	Net.ShipRiteReports	US Origin: Emailed POS receipt shows "HST Tax" instead of "Sale Tax".