



www.shiprite.net

info@shipritesoftware.com

## Critical Update v. 10.18.3

**This Update must be installed ASAP in order to prevent service interruptions!**

### Overview

- Time to Download: 1-5 minutes.
- Time to apply update: 5-10 minutes.
- It is recommended you download and install this update at the end of day, and not as you arrive for work, unless you get to the center at least 30 minutes ahead of time.

- New industry regulations require to end support for the TLS 1.0 internet security protocol. ShipRite version 10.18.3 has to be installed in order to comply with those regulations.

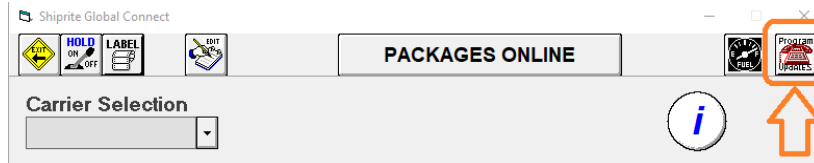
TLS 1.0 will be phased out by all carriers by June 30<sup>th</sup>.

**Any ShipRite user who is not updated in time, will not be able to process shipments.**

- New "Fuzzy" search added to invoice/customer lookup.
- New option to print 8.5x11 invoice from payment screen
- New UPS ASO Retail Incentive Schedule

## Installation

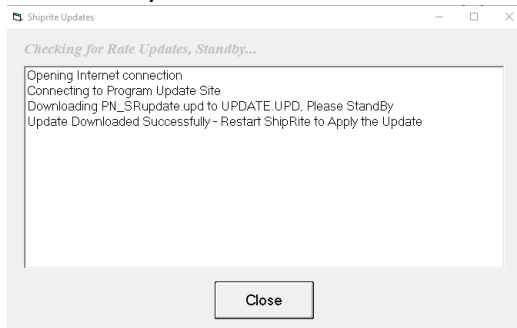
1. Backup your ShipRite database. You should be backing up DAILY. If you are not, please go to [www.shipritesoftware.com/FAQS](http://www.shipritesoftware.com/FAQS), download the "Backup ShipRite" instructions, and then apply the backup procedure.
2. The Update has to be done on the server computer with ShipRite closed on all other workstations.
3. On the server, from the main ShipRite screen, click on the EOD button. In the top right corner, click on the Program Updates button.



*(Note: If Program update button does not work, go to page 3 of this document to manually download the update)*

4. A ShipRite Updates status screen will display with information that the update is being downloaded. Depending on your internet speed, this can take a few minutes to complete.

When done, a message will display informing that the Update downloaded successfully. Close the screen and close out of ShipRite completely.



5. After closing ShipRite, open it right back up from the desktop shortcut. During the initial startup, a message will appear stating the Program Update has been located. Click YES to install the update.

6. A prompt will appear to install the "SAP Crystal Reports Runtime Engine for .Net Framework". Click "Next" to start installation and follow the prompts on the screen. Once installation is completed, click "Finish"

7. A prompt will come up to install the ShipRiteNet 4.5 module. Follow the prompts to install it as well.

**If prompted to repair or remove ShipRiteNet 4.5, select Repair.**

8. After the installation is completed, start ShipRite back up from your normal icon. The first time ShipRite is started up, the software will go through a loading procedure. This is normal.

The update is now completed.

### **Workstations**

After the server is updated, start ShipRite on any additional workstation that is present. The first time ShipRite is started up, a popup message will appear to install the SAP Crystal Reports Runtime Engine" on each workstation. Follow prompts on screen to install.

Start ShipRite back up, another popup message will appear ("Failed to Load ShipRiteNet module"). Press YES on that pop-up dialog and follow prompts on the screen to install the current ShipRiteNet module.

**If prompted to repair or remove ShipRiteNet4.5, select Repair.**

### **In the event the Program Update button fails to download the update:**

It's possible that a firewall or anti-virus software blocks the Program update from being downloaded. If that is the case follow these instructions:

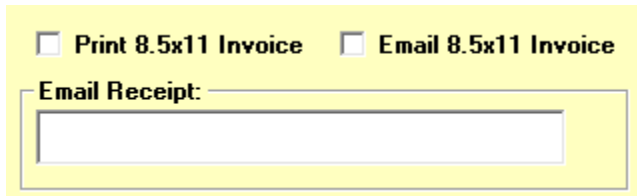
1. Click [<<HERE>>](#) to manually download the US update.  
(Canadian Locations, please click [<<HERE>>](#) to download the Canadian Update)
2. SAVE to your desktop. Double click on the file name: SRUpdate\_10.18.3.exe
3. Click NEXT to start the loading process, then FINISH to complete the installation.
4. A message will come up to install the SAP Crystal Reports Runtime Engine. Click Next and follow prompts to install.
5. Next you will receive messages that the ShipRite Dot Net 4.5 need to update. Go ahead and click YES and continue until done. Click CLOSE when done.  
If prompted to Repair or Remove, select Repair.
6. Start the ShipRite Program from the normal icon. You will get a message that X number of Database fields were added. This is normal. You will be required to restart the program again.
7. At this point start up ShipRite on the workstations. If prompted to repair or remove ShipRiteNet4.5, select Repair.

Once the ShipRite Main Menu screen pops up, you are updated.

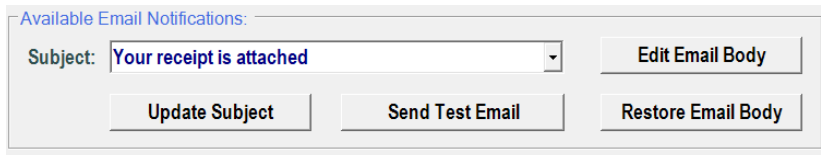
## New Features

### 8.5x11 Invoices:

From the POS payment screen print and/or mail 8.5x11 invoices by checking the appropriate checkboxes.



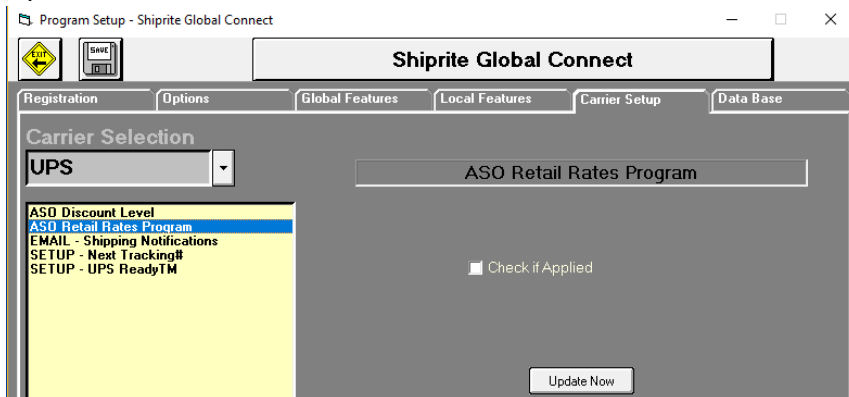
To edit the email message that gets sent out with the 8.5x11 Invoice, please go to Setup > General Setup Options > Global Features > EMAIL Setup. Select the “Your Receipt is Attached” Email Notification.



At this point you can edit the subject and click “Update Subject” to save. Also, click the “Edit Email Body” option to change the text of the email.

### UPS ASO Retail Rate Program

If you signed up with the new UPS Retail Rate program, go to Setup > General Setup Options > Carrier Setup > ASO Retail Rates Program. Check the “Check if Applied” textbox and click Update Now.



Enabling this option will apply the new UPS discount structure as well as change the dim weight factor to 166 for air and ground shipments. It will also force ShipRite to charge the official UPS Retail Rates and disable any shipping markups.

Fuzzy Search:

The search algorithm for the customer lookup and invoice lookup have been changed from a “Starts With” to a “Contains” search. ShipRite will now look for the entered search term anywhere within the name, not just the beginning.

For example, typing in “rite” will display “Shiprite” as one of the search results.

**Fixes Included in 10.18.3**

Type	Module	Description
Fix	EndiciaWeb	Saved Endicia credentials are overwritten if ShipriteSetup_Integrations database is found in datapath.
Fix	Net45.EndiciaWeb	Updated EndiciaWeb to ShipRiteNet4.5 module to allow use of TLS 1.2 security protocol.
Fix	Net45.FedExWeb	Updated FedExWeb to ShipRiteNet4.5 module to allow use of TLS 1.2 security protocol.
Fix	Net45.Inhouse	Updated SAP Crystal Reports to version 13.0.22.
Fix	Inhouse	Updated ShipRiteNet3.5 completely to ShipRiteNet4.5.
New	ContactSearch	Updated customer lookup form to search for contacts using fuzzy search instead of starts-with search.
New	Search	Updated search form to search for data (e.g. invoices in invoice lookup) using fuzzy search instead of starts-with search.
Fix	Net45.EmailNotification	Updated to send email notification using TLS 1.2 security protocol.
New	Payments	Added options to payments form to allow user to print/email an 8.5x11 invoice at the end of a sale.
Fix	Net45.DropOff	Updated DHL Drop Off request to use TLS 1.2 security protocol.
Fix	POS	Updated POS form to highlight current contact info in red if contact has notes attached.
New	Shipping	Added message prompt to verify shipping customer's ID when selecting shipping service and enabled for FedEx shipments.
New	ProgramSetup	PostNet: Added option to enable PostNet negotiated UPS incentive pricing and set the discount level.
New	UPS	PostNet: Added PostNet negotiated UPS incentive discount level pricing when enabled.
New	ProgramSetup	Legacy: Added option to enable UPS ASO Retail Rates program.
New	UPS	Legacy: Added UPS ASO Retail Rates program incentive discount level pricing when enabled.
New	UPS	Legacy: Added UPS ASO Retail Rates program dimensional weight factor of 166 when enabled.
New	ShipMaster	Legacy: Enabled UPS Retail Rates when UPS ASO Retail Rates program enabled.
New	POS	Added message prompts to allow user to print/email an 8.5x11 invoice when reprinting receipt.