



[www.shiprite.net](http://www.shiprite.net)

[info@shipritesoftware.com](mailto:info@shipritesoftware.com)

## ShipRite UPDATE: Version 10.16.9 2017 Pricing Update: UPS/ FedEx/ DHL

### OVERVIEW

This is a ShipRite update. The version number is 10.16.9. The Update takes approximately 25-40 seconds to download and 4-15 minutes to apply the update, depending on the size of your center's database. It is recommended you install this Hot Fix at the end of the day, and not as you arrive for work, unless you get to the center at least 1 hour ahead of time.

US Postal Service prices go up on January 22, 2017. There will be a SEPARATE price update for them.

### COMPLETE THE FOLLOWING CHECKLIST BEFORE YOU INSTALL THE UPDATE

1. Back up your ShipRite database. Note: You should be backing up DAILY. If you are not, please go to [www.shipritesoftware.com/FAQS](http://www.shipritesoftware.com/FAQS) and download the documentation for future reference, and then perform the backup procedure.
2. Make a note of the DRAWER ID on the server.
3. Close the drawers on all stations – clients and the server.
4. Close ShipRite on all stations – clients and the server.
5. THIS UPDATE NEED ONLY BE RUN ON THE SERVER. It assumes the data path is C:\ShipRite
6. Do not run this update on the clients.

### UPDATE INSTALLATION:

NOTE: This update is performed on the SERVER only. After you have completed the update on the server, you may start each workstation. You will then be prompted to update the ShipRite Net module. Answer YES when prompted.

1. Click [HERE](#) to download the update.
2. SAVE to your desktop.
3. Double-click on the file name [support.shipritesoftware.com/ShipRite\\_Updates/Update\\_10.16.09\\_DHL-FedEx-UPS\\_Rates.exe](http://support.shipritesoftware.com/ShipRite_Updates/Update_10.16.09_DHL-FedEx-UPS_Rates.exe) to start the InstallShield Wizard. Click NEXT to start the loading process and then click FINISH to complete the installation.

You will start the program from the icon like normal. Once the ShipRite Main Menu screen pops up, you are updated.

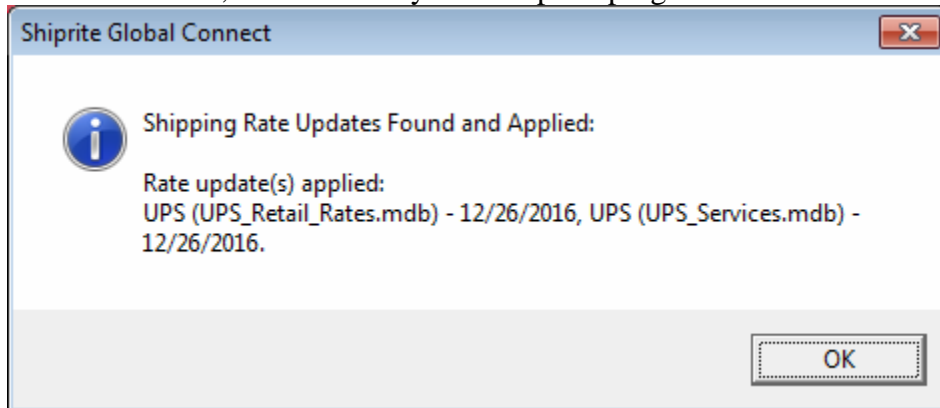
For your workstations: Just start the program like normal.

## How the Update is Applied:

### A. UPS Rates Change

Prior to December 26, 2016, there will be no change in rates or business rules. UPS Rates will change automatically on December 26, 2016.

DECEMBER 26, 2016: When you startup the program for the first time on this day, you should get this dialog



Click OK.

### ***Check Daily Rates:***

Start ShipRite. From the main menu, go to Actions: Table Management: Service Tables. One at a time, click on the UPS tables and compare them against the UPS rates... [http://rates.ups.com/pdfs/preview\\_daily\\_rates.pdf](http://rates.ups.com/pdfs/preview_daily_rates.pdf)

### ***Change Accessorial Revenue:***

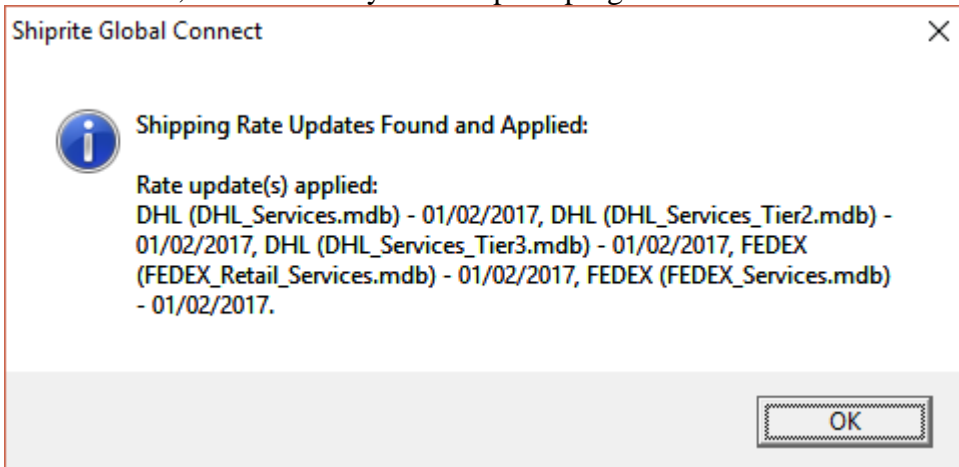
You must now log into ShipRite, go to ACTIONS : TABLE MANAGEMENT: MASTER SHIPPING TABLE: UPS: ACCESSORIAL REVENUE: You are to check ALL the fees and make sure they are charging what you want. Not all Accessorial Revenue items are changed. Review what is changed here:

<http://rates.ups.com/surcharges.html> . This update does NOT affect the cost or selling price. You must change them yourself.

There is a WORKSHEET at the end of this document for you to use to figure out your retail price for these services.

## B. Fedex RATE CHANGES

JANUARY 2, 2017: When you startup the program for the first time on this day, you should get this dialog



Click OK.

### ***Check Daily Rates:***

Start ShipRite. From the main menu, go to Actions: Table Management: Service Tables. One at a time, click on the FedEx tables and compare them against the FedEx rates...

[http://images.fedex.com/us/services/pdf/FedEx\\_StandardListRates\\_2017.pdf](http://images.fedex.com/us/services/pdf/FedEx_StandardListRates_2017.pdf)

### ***Change Accessorial Revenue:***

You must now log into ShipRite, go to ACTIONS : TABLE MANAGEMENT: MASTER SHIPPING TABLE: FedEx: ACCESSORIAL REVENUE: You are to check ALL the fees and make sure they are charging what you want. Not all Accessorial Revenue items are changed. Review what is changed here:

<http://www.fedex.com/us/shipping-rates/surcharges-and-fees.html> . This update does NOT affect the cost or selling price. You must change them yourself.

There is a WORKSHEET at the end of this document for you to use to figure out your retail price for these services.

## c. DHL 2017 Price Increase

JANUARY 2, 2017: The new DHL shipping rates will be applied automatically.

### ***Check Daily Rates:***

Start ShipRite. From the main menu, go to Actions: Table Management: Service Tables. One at a time, click on the DHL tables and compare them against the DHL rates...

[http://www.dhl-usa.com/content/dam/downloads/us/express/shipping/rate\\_guides/dhl\\_express\\_service\\_rate\\_guide\\_us\\_en.pdf](http://www.dhl-usa.com/content/dam/downloads/us/express/shipping/rate_guides/dhl_express_service_rate_guide_us_en.pdf)

### ***Change Accessorial Revenue:***

You must now log into ShipRite, go to ACTIONS : TABLE MANAGEMENT: MASTER SHIPPING TABLE: DHL: ACCESSORIAL REVENUE: You are to check ALL the fees and make sure they are charging what you want. Not all Accessorial Revenue items are changed. Review what is changed in the DHL Guide above, Page 15.

This update does NOT affect the cost or selling price. You must change them yourself. There is a WORKSHEET at the end of this document for you to use to figure out your retail price for these services.

## D. Carrier Business Rule Changes:

- a. UPS: these rules will be applied automatically on the appropriate day.

### Additional Handling Surcharge

- Effective January 8, 2017, the Additional Handling charge will apply to any package with the longest side exceeding 48 inches, instead of 60 inches for all UPS Air, UPS 3 Day Select® and International packages.

### Dimensional Weight

- Effective January 8, 2017, UPS will change the dimensional weight calculation for U.S. domestic services and UPS Standard from Canada import packages subject to UPS Daily rates.
- U.S. domestic services packages that are greater than 1,728 cubic inches will use a 139 divisor to calculate dimensional weight. U.S. domestic services packages less than or equal to 1,728 cubic inches will continue to use a 166 divisor to calculate dimensional weight.
- UPS Standard from Canada import shipments will use a 139 divisor to calculate dimensional weight.

### Fuel Surcharge

- Effective February 6, 2017, U.S. fuel surcharge will be adjusted weekly.

- b. FEDEX: these rules will be applied automatically on the appropriate day.

### Dimensional Weight

Effective Jan. 2, 2017, the dimensional weight calculation for FedEx Express® and FedEx Ground® packages will change. Dimensional weight for all shipments within the U.S. and FedEx Express shipments between the U.S. and Puerto Rico will be calculated by multiplying the length by width by height of each package in inches and dividing the total by 139. Previously, dimensional weight for all shipments within the U.S. and FedEx Express shipments between the U.S. and Puerto Rico was calculated by dividing the total by 166. See the [FedEx Service Guide](#) for more information.

## Fuel Surcharge

Effective Feb. 6, 2017, the fuel surcharge percentage for FedEx Express and FedEx Ground shipment will be subject to weekly adjustment.

c. DHL: these rules will be applied automatically on the appropriate day.

effective Jan. 2, 2017, the dimensional weight calculation for Express packages moving between U.S. and Puerto Rico will change. The dimensional weight for shipments between the U.S. and Puerto Rico will be calculated by multiplying the length by width by height of each package in inches and dividing the total by 139. Previously, dimensional weight for all shipments between the U.S. and Puerto Rico was calculated by dividing the total by 166.

## Accessorial Charges

**DHL (effective Jan 2, 2017) Reference: DHL 2017 Rate Guide**

[http://www.dhl-](http://www.dhl-usa.com/content/dam/downloads/us/express/shipping/rate_guides/dhl_express_service_rate_guide_us_en.pdf)

[usa.com/content/dam/downloads/us/express/shipping/rate\\_guides/dhl\\_express\\_service\\_rate\\_guide\\_us\\_en.pdf](http://www.dhl-usa.com/content/dam/downloads/us/express/shipping/rate_guides/dhl_express_service_rate_guide_us_en.pdf)

	Min Charge Cost	Min Charge Retail	New Cost	New Retail
<b>2017 Fees &amp; Retail</b>				
			Cost	Sell
<b>Residential Delivery</b>			\$3.85	<input type="text"/>
<b>Remote Area Delivery</b>	\$34.00	<input type="text"/>	0.34/lb	<input type="text"/>
<b>Large Package Fee (Non Stack Pallet)</b>			\$135.00	<input type="text"/>
<b>Oversize</b>			\$72.50	<input type="text"/>
<b>Saturday Delivery</b>			\$50.00	<input type="text"/>
<b>Shipment Value Protection SVP</b>				
Free up to 100				
Min Charge	\$3.00	<input type="text"/>		
For Each Addl \$100 of value			\$1.00	<input type="text"/>
<b>Elevated Risk</b>			\$20.00	<input type="text"/>
<b>Restricted Destination Surcharge</b>			\$30.00	<input type="text"/>
<b>Exporter Validation Surcharge</b>			\$30.00	<input type="text"/>

**FedEx (effective Jan 2, 2017) <http://www.fedex.com/us/shipping-rates/surcharges-and-fees.html>**

	Min Charge Cost	Min Charge Retail	New Cost	New Retail
<b>Residential Delivery: Air</b>			\$3.85	
<b>Residential Delivery: Ground</b>			\$3.85	
<b>CO</b>				
<b>D</b>			\$13.00	
<b>Indirect Signature Required</b>			\$4.50	
<b>Direct Signature Required</b>			\$4.50	
<b>Adult Signature Required</b>			\$5.50	
<b>Additional Handling</b>			\$11.00	
<b>Saturday Delivery</b>			\$16.00	
<b>Delivery Area Surcharge</b>				
Commercial Air			\$2.60	
Residential Air			\$3.90	
Commercial Ground			\$2.45	
Residential Ground			\$3.90	
<b>Remote Area Surcharge</b>			\$30.00	
<b>Oversize- Large Pkg Surcharge</b>			\$72.50	
<b>Declared Value</b>				
Free up to 100				
Min Charge		\$3.00		
For Each Addl \$100 of value			\$1.00	
<b>Letter Markup Fee*</b>				
*This is also the simple markup for FedEx ONE RATE				
Home Delivery Date Certain			\$3.00	
Home Delivery Evening			\$7.00	
Home Delivery Appointment			\$15.00	

**UPS (effective Dec 26, 2016) SOURCE: <http://www.rates.ups.com/surcharges.html>**

<b>Residential Surcharge</b>				
Ground, Candian Ground			\$3.40	
USA and Intl Air			\$4.00	
<b>CO</b>				
<b>D</b>			\$12.90	
<b>Indirect Signature</b>			\$2.25	
<b>Delivery Confirmation W/Signature</b>			\$4.50	
<b>Adult Signature Required</b>			\$5.50	
<b>Large Package Fee</b>			\$70.00	
<b>Additional Handling</b>			\$10.85	
<b>Saturday Delivery</b>			\$16.00	
<b>DAS Surcharge Air- RES</b>			\$3.80	

<b>DAS Surcharge Air- COMM</b>		\$2.55	<input type="text"/>
<b>DAS Surcharge Grnd- RES</b>		\$3.25	<input type="text"/>
<b>DAS Surcharge Grnd- COMM</b>		\$2.40	<input type="text"/>
<b>Extended Area Surcharge Intl</b>			
Min Charge		\$30.00	<input type="text"/>
or per LB, whichever is greater		\$0.30	<input type="text"/>
<b>Remote Area Surcharge</b>		\$3.55	<input type="text"/>
<b>Declared Value</b>			
Free up to 100			
Min Charge Up to \$200	\$2.70		<input type="text"/>
For Each Addl \$100 of value		\$0.90	<input type="text"/>
<b>Letter Markup Fee</b>			<input type="text"/>