



www.shipritesoftware.com

info@shipritesoftware.com

ShipRite Update v.10.20.7

New UPS ASO Flat Discount structure

Please install this update as soon as possible.

Overview

- Time to Download: 25-40 Seconds.
- Time to apply update: 1-5 minutes.
- When first opening ShipRite, the top header should read **v.10.20.7 – Build 1.** If it does not, please re-download the update.

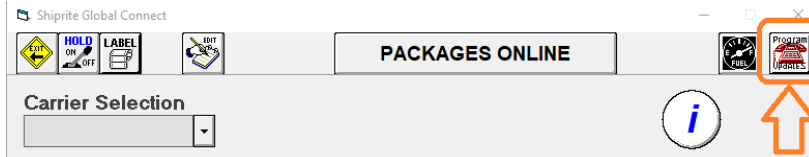
New UPS ASO flat incentive discount structure – Effective 11/16/2020

- UPS is moving from a tier-based incentive structure to a flat incentive structure for all ASO locations.
- The update can be downloaded at any time before the effective date. When starting the software on 11/16/2020, ShipRite will automatically load the new discount structure.

Technical Support is available Saturday 10am – 3pm EST.
Monday – Friday 8am-8pm EST.

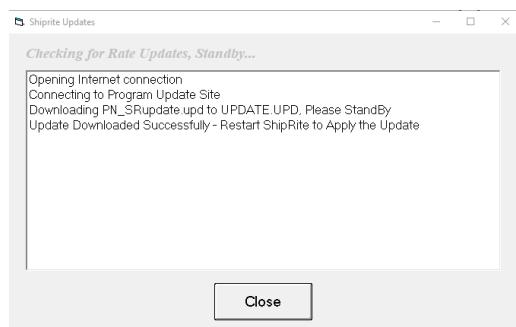
Installation

1. Backup your ShipRite database. You should be backing up DAILY. If you are not, please go to www.shipritesoftware.com/FAQS, download the "Backup ShipRite" instructions, and then apply the backup procedure.
2. The Update has to be done on the server computer with ShipRite closed on all other workstations.
3. On the server, from the main ShipRite screen, click on the EOD button. In the top right corner, click on the Program Updates button.



If Program Update button does NOT work, go to the next page of this document to manually download the update!

4. A ShipRite Updates status screen will display with information that the update is being downloaded. Depending on your internet speed, this can take a few minutes to complete. When done, a message will display informing you that the Update downloaded successfully. Close the screen and close out of ShipRite completely.



5. After closing ShipRite, open it right back up from the desktop shortcut. During the initial startup, a message will appear stating the Program Update has been located. Click YES to install the update.
6. If an updated version of the ShipRiteNet 4.5 module needs to be installed, a prompt will come up to install it. Follow the prompts to install it as well.
7. After the installation is completed, start ShipRite back up from your normal icon. The first time ShipRite is started up, the software will go through a loading procedure. This is normal.

The update is now completed.

If Program Update button fails to download the update:

It's possible that a firewall or anti-virus software blocks the Program Update from being downloaded. If that is the case follow these instructions:

1. Click [<<HERE>>](#) to manually download the US update.
2. SAVE to your desktop. Double click on the file name: Update_10.20.7.exe
3. Click NEXT to start the loading process, then FINISH to complete the installation.
4. If a message comes up to install the SAP Crystal Reports Runtime Engine, follow prompts to install.
5. If you receive prompts that the ShipRiteNet 4.5 module needs to update, go ahead and click YES and continue until done. Click CLOSE when done. If prompted to Repair or Remove, select Repair.
6. Start the ShipRite Program from the normal icon. You may get a message that X number of Database fields were added. This is normal. You will be required to restart the program again.
7. At this point start up ShipRite on the workstations.

Once the ShipRite Main Menu screen pops up, you are updated.

Workstations

After the server is updated, start ShipRite on any additional workstation that is present.

The first time ShipRite is started up on a workstation, a popup message may appear to install the "SAP Crystal Reports Runtime Engine" on each workstation if not already installed. Follow prompts on screen to install.

Start ShipRite back up.

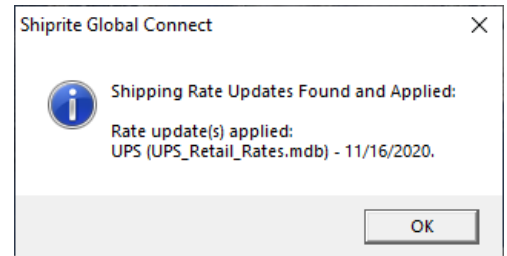
If the ShipRiteNet 4.5 module needs to be updated on the workstation, a popup message will appear ("Failed to Load ShipRiteNet 4.5 module"). Press YES on that pop-up dialog and follow prompts on the screen to install the current ShipRiteNet module.

If prompted to repair or remove ShipRiteNet4.5, select Repair.

New UPS Incentive Structure

UPS is moving from a tier-based incentive structure to a flat incentive structure for all Authorized Shipping Centers. Starting 11/16/2020 ShipRite will automatically load the new discount structure into your software.

When starting the software on 11/16/2020, the following message will appear as a confirmation that the new discount structure has been loaded:



The new ASO incentives can be review below:

Service	Discount
UPS Next Day Early	7%
UPS Next Day Air	36%
UPS Next Day Air Saver	36%
UPS 2 Day AM	33%
UPS 2 Day Air	33%
UPS 3 Day Select	33%
UPS Ground Commercial 1-10 lbs	40%
UPS Ground Commercial 11-20 lbs	40%
UPS Ground Commercial 21-30 lbs	46%
UPS Ground Commercial > 30 lbs	46%
UPS Ground Residential 1-10 lbs	27%
UPS Ground Residential 11-20 lbs	27%
UPS Ground Residential 21-30 lbs	40%
UPS Ground Residential > 30 lbs	42%
UPS Worldwide Express	55%
UPS Worldwide Saver	57%
UPS Worldwide Expedited	52%
UPS Standard to Canada	10%
UPS Standard to Mexico	25%
Puerto Rico Next Day Air	36%
Puerto Rico 2 Day Air	33%
Alaska Early AM	7%
Alaska/Hawaii Next Day Air	36%
Alaska/Hawaii 2 Day Air	33%

Fixes Included in version 20.7

Type	Module	Description
	Build 1	
New	UPS	Updated UPS ASO incentives to flat discounts effective 11/16/2020.
New	SetupProgram	Removed UPS ASO Discount Level setting in UPS carrier setup effective 11/16/2020.