



www.shipritesoftware.com

info@shipritesoftware.com

Canada Update v.10.22.1

This is a Critical Update that must be installed ASAP.

Overview

- Time to Download: 25-40 Seconds.
- Time to apply update: 5 minutes.
- It is recommended you download this at the end of day, and not as you arrive for work, unless you get to the center at least 1 hour ahead of time.

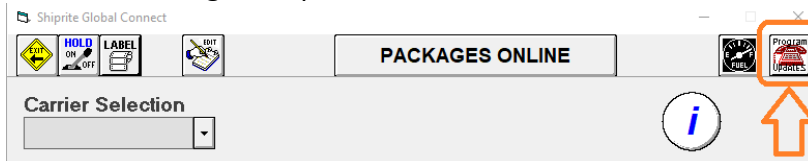
- New 2022 Rate changes for UPS, DHL, FedEx, Purolator, and Canada Post

UPS, DHL, FedEx, Purolator, and Canada Post Rates are effective immediately.

*Technical Support will be available Saturday 10am – 3pm EST.
Monday – Friday 8am-8pm EST.*

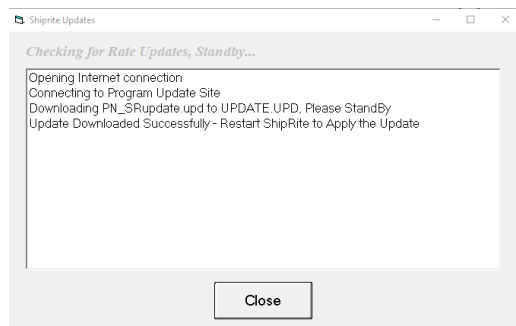
Installation

1. Backup your ShipRite database. You should be backing up DAILY. If you are not, please go to www.shipritesoftware.com/FAQS, download the "Backup ShipRite" instructions, and then apply the backup procedure.
2. The Update has to be done on the server computer with ShipRite closed on all other workstations.
3. On the server, from the main ShipRite screen, click on the EOD button. In the top right corner, click on the Program Updates button.



If Program Update button does NOT work, go to the next page of this document to manually download the update!

4. A ShipRite Updates status screen will display with information that the update is being downloaded. Depending on your internet speed, this can take a few minutes to complete. When done, a message will display informing you that the Update downloaded successfully. Close the screen and close out of ShipRite completely.



5. After closing ShipRite, open it right back up from the desktop shortcut. During the initial startup, a message will appear stating the Program Update has been located. Click YES to install the update.
6. If an updated version of the ShipRiteNet 4.5 module needs to be installed, a prompt will come up to install it. Follow the prompts to install it as well.
7. After the installation is completed, start ShipRite back up from your normal icon. The first time ShipRite is started up, the software will go through a loading procedure. This is normal.

The update is now completed.

If Program Update button fails to download the update:

It's possible that a firewall or anti-virus software blocks the Program Update from being downloaded. If that is the case follow these instructions:

1. Click [<<HERE>>](#) to manually download the Canadian update.
2. SAVE to your desktop. Double click on the file name: UpdateCanada_10.22.1.exe
3. Click NEXT to start the loading process, then FINISH to complete the installation.
4. If a message comes up to install the SAP Crystal Reports Runtime Engine, follow prompts to install.
5. If you receive prompts that the ShipRiteNet 4.5 module needs to update, go ahead and click YES and continue until done. Click CLOSE when done. If prompted to Repair or Remove, select Repair.
6. Start the ShipRite Program from the normal icon. You may get a message that X number of Database fields were added. This is normal. You will be required to restart the program again.
7. At this point start up ShipRite on the workstations.

Once the ShipRite Main Menu screen pops up, you are updated.

Workstations

After the server is updated, start ShipRite on any additional workstation that is present.

The first time ShipRite is started up on a workstation, a popup message may appear to install the "SAP Crystal Reports Runtime Engine" on each workstation if not already installed. Follow prompts on screen to install.

Start ShipRite back up.

If the ShipRiteNet 4.5 module needs to be updated on the workstation, a popup message will appear ("Failed to Load ShipRiteNet 4.5 module"). Press YES on that pop-up dialog and follow prompts on the screen to install the current ShipRiteNet module.

If prompted to repair or remove ShipRiteNet4.5, select Repair.

Fixes Included in version 22.1

| Type | Module | Description |
|------|---------------------------|--|
| | Build 1 | |
| New | UPS | Canada Origin: Updated UPS rates effective 12/26/2021. |
| New | DHL | Canada Origin: Updated DHL rates effective 01/01/2022. |
| New | FedEx | Canada Origin: Updated FedEx rates effective 01/03/2022. |
| New | Purolator | Canada Origin: Updated Purolator rates effective 09/01/2021. |
| New | CanadaPost | Canada Origin: Updated Canada Post rates effective 09/13/2021. |
| New | Net45.FedExWeb | Updated FedEx Ship web service to v28 and Rate web service to v31. |
| New | UPS | Updated UPS Additional Handling surcharge increase if domestic package based on weight effective 12/26/2021. |
| New | UPS | Updated UPS Large Package surcharge increase if residential package effective 12/26/2021. |
| Fix | FedEx | Updated FedEx Freight to fix invalid procedure call error when preparing ship request. |
| Fix | ContactSearch | Updated Verify Address procedure from obsolete FedEx Web Services Utility to ShipRiteNet4.5 module. |
| Fix | Address Book | Updated Verify Address procedure from obsolete FedEx Web Services Utility to ShipRiteNet4.5 module. |
| Fix | FedEx | Updated obsolete FedEx Web Services Utility procedures to ShipRiteNet4.5 module. |
| Fix | ShipMaster | Removed obsolete FedEx Web Services Utility procedures. |
| Fix | EOD | Updated FedEx Close Ground Manifest procedure from obsolete FedEx Web Services Utility to ShipRiteNet4.5 module. |
| Fix | Net45.Gateway2ShipRiteNet | Updated FedEx Address Validation procedure to fix contact conversion error. |
| Fix | Net45.Gateway2ShipRiteNet | Added FedEx Close Ground Manifest procedure to gateway. |
| Fix | Reports | Canada Origin: Updated Sales Tax Report to fix Tax Exempt Items Subtotal calculation to subtract Discounts value. |
| Fix | FedEx | Updated FedEx Intl ship request to countries CN, HK, RU, VE to include EEI export detail to prevent FTR Exemption error. |
| Fix | Net45.CommonShip | Updated BarCode Auto Detect to truncate USPS tracking# of length 34. |
| Fix | Net45.UPSWeb | Updated UPS Registration Access License Key request to fix issue where address line 1 doubled in request. |
| Fix | AutoPayments | Updated monthly autopay procedure to add balancing account records with date value to fix issue where AR Ledger and AR Statement can be different. |
| Fix | ProgramSetup | Updated FedEx Registration procedure to download FedEx Eula file via http instead of ftp. |