



[www.shipritesoftware.com](http://www.shipritesoftware.com)

[info@shipritesoftware.com](mailto:info@shipritesoftware.com)

## ShipRite Update v.10.22.2 – Build 1

**Crucial Rate update for FedEx. This update must be installed by 1/24/2022**

### Overview

- Time to Download: 25-40 Seconds.
- Time to apply update: 2-5 minutes.
- When first opening ShipRite, the top header should read **v.10.22.2 – Build 1**. If it does not, please re-download the update.
- FedEx Additional Handling and Large Package surcharges split into zone-based groups
- New FedEx Additional Handling surcharges effective 1/24/2022
- New FedEx Large Package surcharges effective 1/24/2022

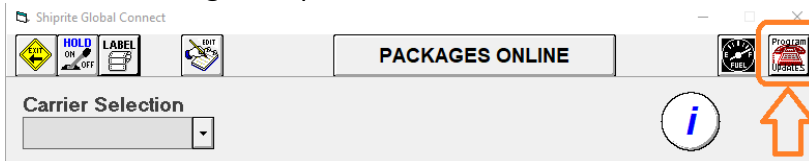
**On 1/24/2022 go to page 4 of these instructions to set your pricing!**

**Note: DO NOT wait until the carrier changes take effect to download and install this update. Installing early won't affect your current rates and helps ensure support availability if necessary.**

Technical Support will be available Saturday 10am – 3pm EST.  
Monday – Friday 8am-8pm EST.

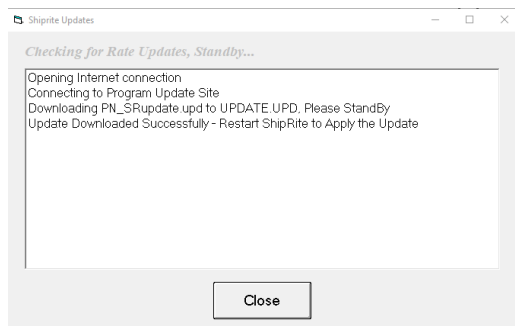
## Installation

1. Backup your ShipRite database. You should be backing up DAILY. If you are not, please go to [www.shipritesoftware.com/FAQS](http://www.shipritesoftware.com/FAQS), download the "Backup ShipRite" instructions, and then apply the backup procedure.
2. The Update has to be done on the server computer with ShipRite closed on all other workstations.
3. On the server, from the main ShipRite screen, click on the EOD button. In the top right corner, click on the Program Updates button.



**If Program Update button does NOT work, go to the next page of this document to manually download the update!**

4. A ShipRite Updates status screen will display with information that the update is being downloaded. Depending on your internet speed, this can take a few minutes to complete. When done, a message will display informing you that the Update downloaded successfully. Close the screen and close out of ShipRite completely.



5. After closing ShipRite, open it right back up from the desktop shortcut. During the initial startup, a message will appear stating the Program Update has been located. Click YES to install the update.
6. If an updated version of the ShipRiteNet 4.5 module needs to be installed, a prompt will come up to install it. Follow the prompts to install it as well.
7. After the installation is completed, start ShipRite back up from your normal icon. The first time ShipRite is started up, the software will go through a loading procedure. This is normal.

**The update is now completed.**

**If Program Update button fails to download the update:**

It's possible that a firewall or anti-virus software blocks the Program Update from being downloaded. If that is the case follow these instructions:

1. Click [<<HERE>>](#) to manually download the update.
2. SAVE to your desktop. Double click on the file name: Update\_10.22.2.exe
3. Click NEXT to start the loading process, then FINISH to complete the installation.
4. If a message comes up to install the SAP Crystal Reports Runtime Engine, follow prompts to install.
5. If you receive prompts that the ShipRiteNet 4.5 module needs to update, go ahead and click YES and continue until done. Click CLOSE when done. If prompted to Repair or Remove, select Repair.
6. Start the ShipRite Program from the normal icon. You may get a message that X number of Database fields were added. This is normal. You will be required to restart the program again.
7. At this point start up ShipRite on the workstations.

Once the ShipRite Main Menu screen pops up, you are updated.

**Workstations**

After the server is updated, start ShipRite on any additional workstation that is present.

The first time ShipRite is started up on a workstation, a popup message may appear to install the "SAP Crystal Reports Runtime Engine" on each workstation if not already installed. Follow prompts on screen to install.

Start ShipRite back up.

If the ShipRiteNet 4.5 module needs to be updated on the workstation, a popup message will appear ("Failed to Load ShipRiteNet 4.5 module"). Press YES on that pop-up dialog and follow prompts on the screen to install the current ShipRiteNet module.

**If prompted to repair or remove ShipRiteNet4.5, select Repair.**

## **New FedEx Additional Handling and Large Package Rates**

FedEx has implemented a new zone-based structure for additional handling and large package fees. The fee is now dependent on the zone the shipment is being sent to.

When first opening the software on January 24<sup>th</sup> or after a reminder will display to set the new pricing in the master shipping table. The correct costs for domestic services will be automatically loaded, please set your marked up sell pricing.

**On January 24<sup>th</sup>, please go to Actions > Table Management > Master Shipping Table > FedEx.**

Select the **FEDEX-1ST** Service and go to the “Accessorial Revenue” tab. Select each one of the line items, update the cost and selling price, and each time **click the “Global Update” button in the top left**. This will apply the selected pricing to all FedEx services.

*(FedEx Authorized Ship Centers (FASC) are exempt from the Additional Handling fee for domestic express shipments)*

<b>Accessorial Fee</b>	<b>Cost</b>	<b>Cost (FASC)</b>	<b>Sell</b>
Additional Handling – Zone 2	\$15.75	\$0	
Additional Handling – Zone 3-4	\$17.50	\$0	
Additional Handling – Zone 5-6	\$19.50	\$0	
Additional Handling – Zone 7+	\$21.50	\$0	
Large Package Fee – Zone 2	\$110.00	\$110.00	
Large Package Fee – Zone 3-4	\$120.00	\$120.00	
Large Package Fee – Zone 5-6	\$135.00	\$135.00	
Large Package Fee – Zone 7+	\$145.00	\$145.00	

Next, update the Accessorial Pricing for international services. Select **FEDEX-CAN** service, go to Accessorial Revenue tab, and update the following surcharges. **Click the “Update Now” button** to apply the selected pricing.

Now go through the remaining international services (FEDEX-INT-1ST, FEDEX-INTE, FEDEX-INTP) and update each one individually.

<b>Accessorial Fee (FEDEX-CAN, FEDEX-INT-1ST, FEDEX-INTE, FEDEX-INTP)</b>	<b>Cost</b>	<b>Cost (FASC)</b>	<b>Sell</b>
Additional Handling	\$21.50	\$21.50	

**FASC's only:**

You are not exempt from the Additional Handling charges for Ground shipments. Select **FEDEX-GND** in the service selection and go to Accessorial Revenue. Update the following pricing, **click the “Update Now”** button to save the change only for FedEx Ground. Do **NOT** click the “Global Update” button at this time.

<b>Accessorial Fee</b>	<b>Cost (FASC)</b>	<b>Sell</b>
Additional Handling – Zone 2	\$15.75	
Additional Handling – Zone 3-4	\$17.50	
Additional Handling – Zone 5-6	\$19.50	
Additional Handling – Zone 7+	\$21.50	

## Fixes Included in version 22.2

Type	Module	Description
	<b>Build 1</b>	
New	MST	Updated FedEx Additional Handling surcharge for domestic services to split into zone groups 2, 3-4, 5-6, and 7+.
New	MST	Updated FedEx Large Package surcharge for domestic services to split into zone groups 2, 3-4, 5-6, and 7+.
New	FedEx	Updated FedEx to process Additional Handling surcharge for domestic services based on zones effective 01/24/2022.
New	FedEx	Updated FedEx to process Large Package surcharge for domestic services based on zones effective 01/24/2022.
New	FedEx	Updated FedEx Additional Handling surcharge increase if package based on weight effective 01/24/2022.
New	FedEx	Updated FedEx Oversize Package surcharge increase if Ground Home Delivery package effective 01/24/2022.
New	Startup	Added one-time message informing user of FedEx Additional Handling and Large Package surcharge changes and update surcharge values per zone group effective 01/24/2022.
New	Startup	Added one-time update to update FedEx Additional Handling and Large Package surcharge values per zone group.
Fix	UPS	Updated UPS to separately identify Remote Area Surcharge zip codes to US48, HI effective 01/09/2022.
Fix	Shiplt	Updated FedEx options screens to fix issue where fuel surcharge re-calculated when FedEx charge retail setting enabled.
Fix	UPS	Updated UPS Intl EAS/RAS location listing to fix erroneous Spain postal codes.