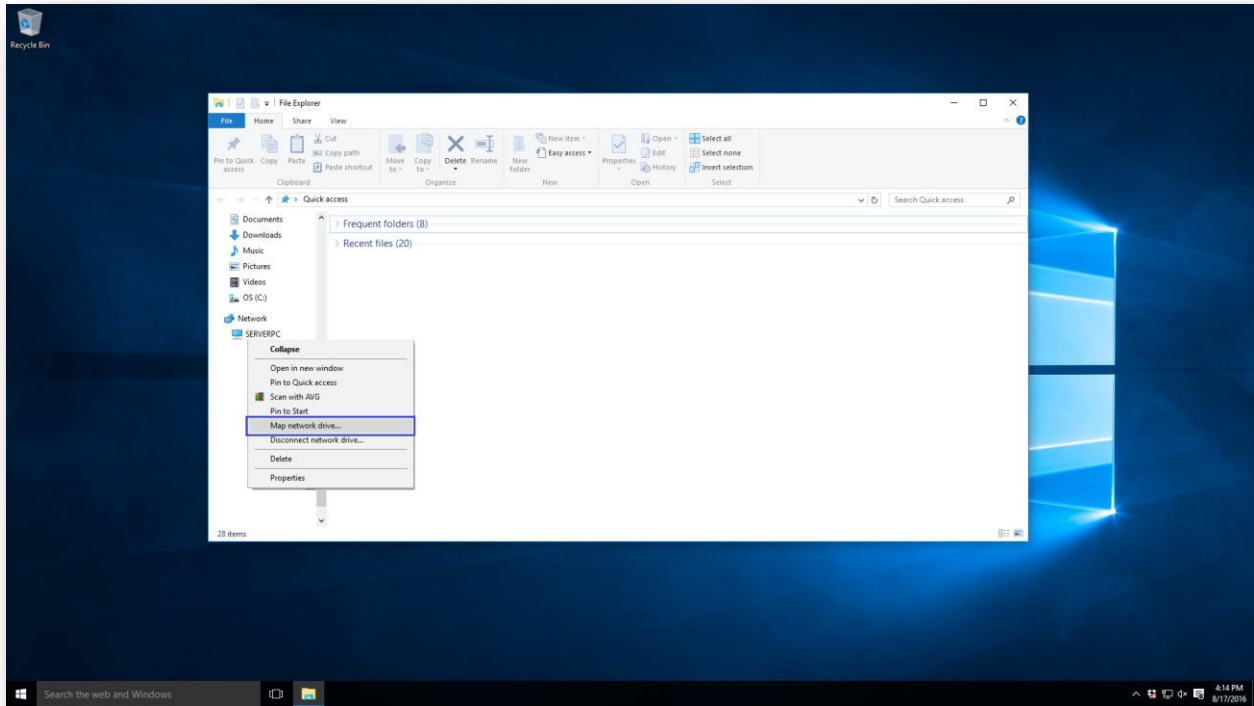
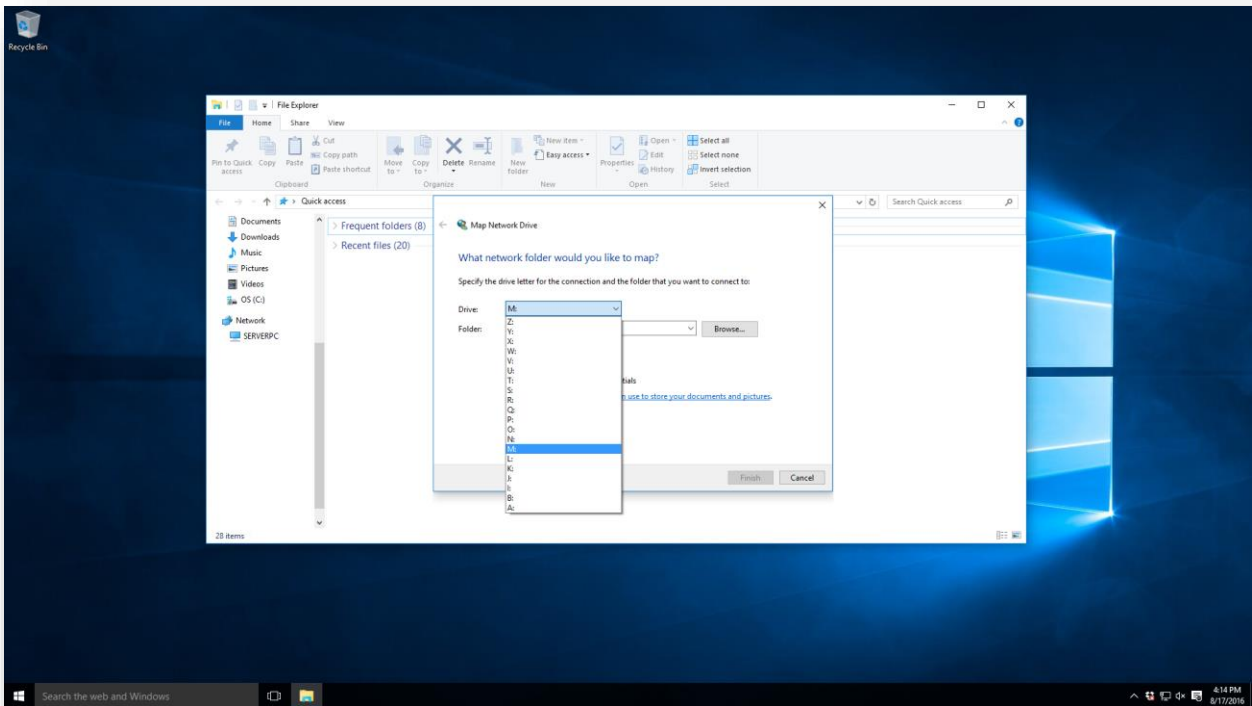


Networking Instructions: Windows 10

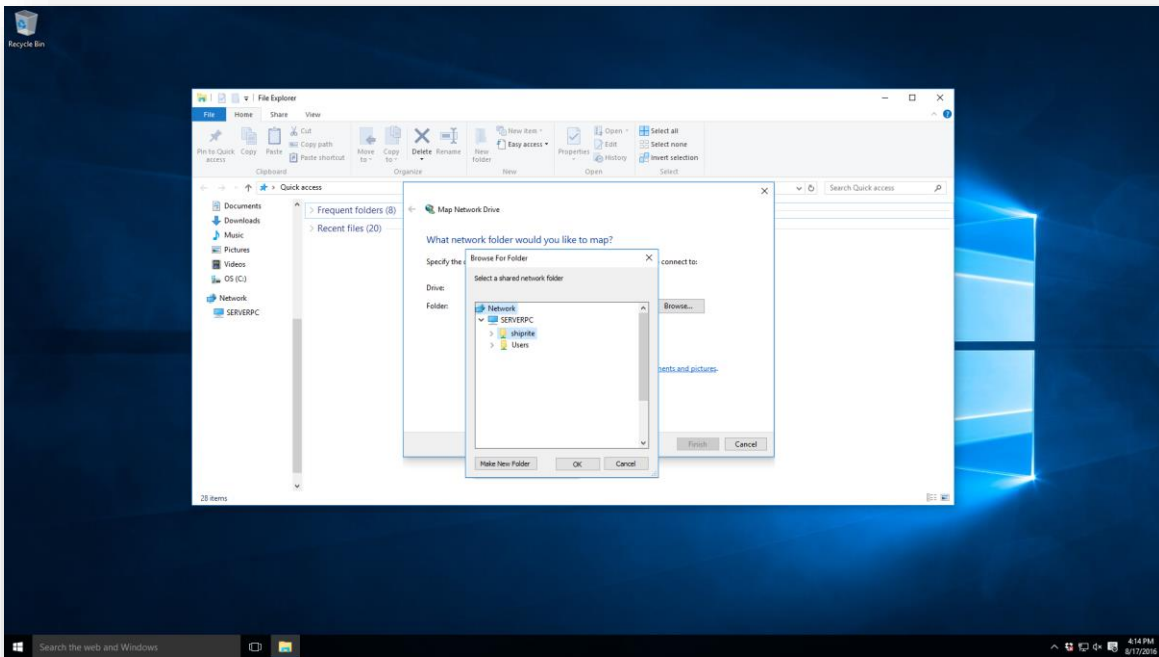
Part 2: Setting up the Client/Workstation PC



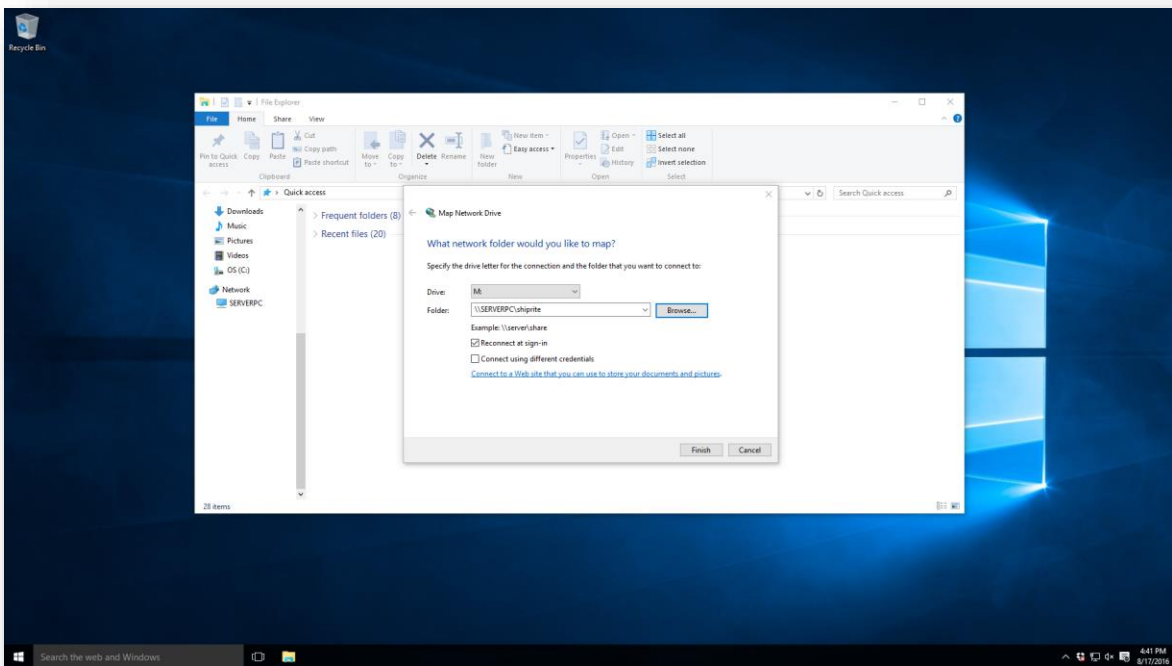
- From the *Windows Desktop*, click the *File Explorer* icon at the bottom of the screen, on the *Windows Taskbar*
- On the left-pane, scroll down and right-click on *Network*
- Select *Map network drive...* from the sub-menu



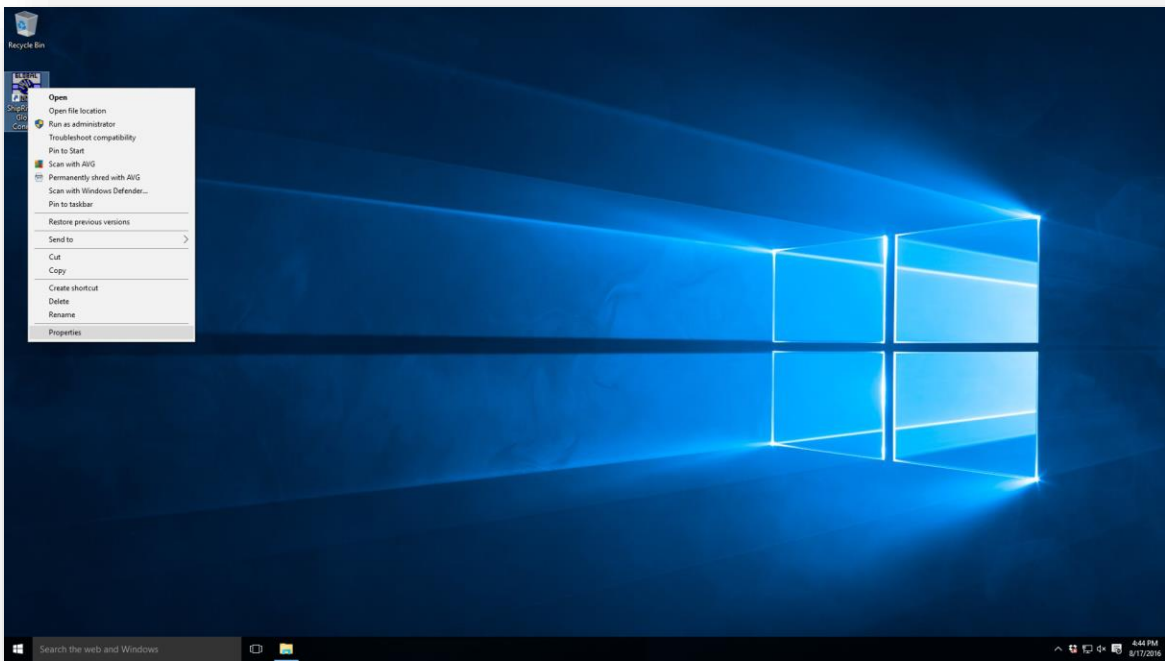
- Use the drop-down menu to select the drive letter; in this example, we are selecting the letter *M* as our *mapped network drive* letter
- Click the *Browse...* button



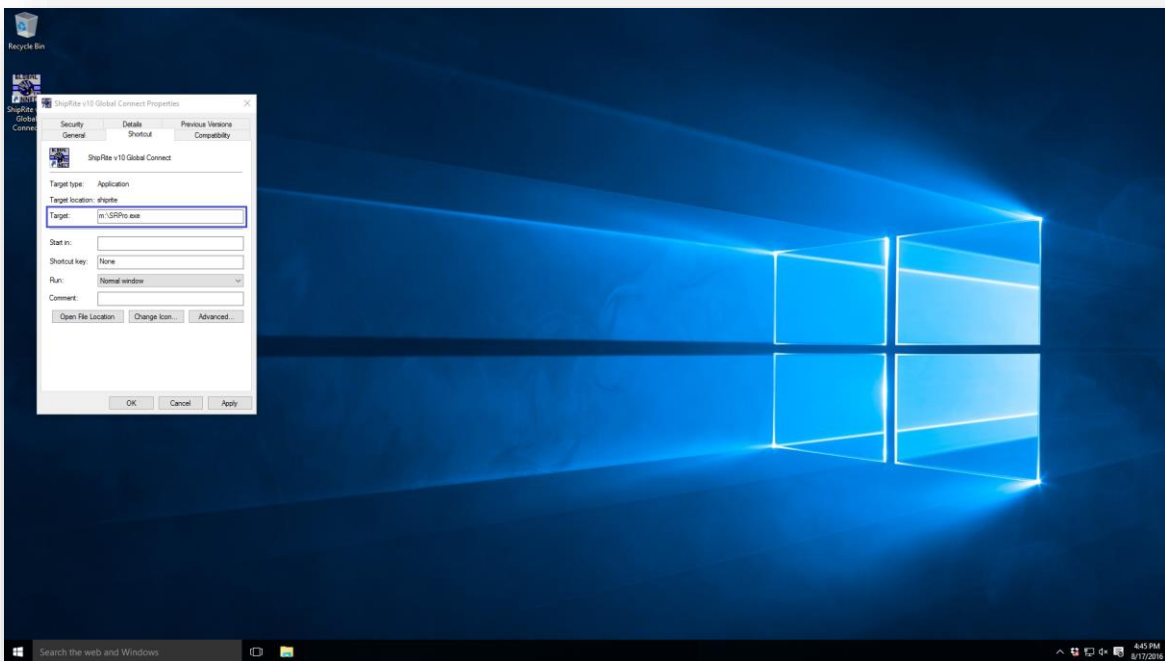
- Browse for the *shared shiprite folder* on your *main server pc* (covered in Part 1)
- Highlight the *ShipRite* folder and click the *OK* button



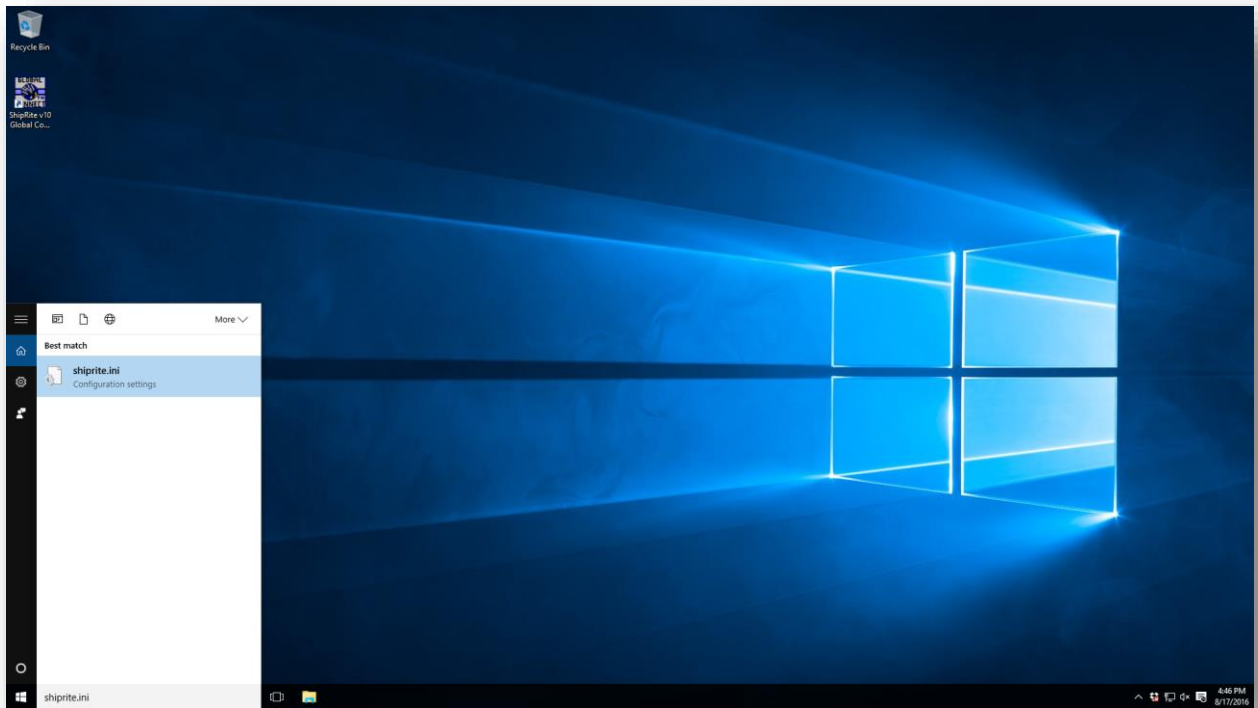
- Click the *Finish* button



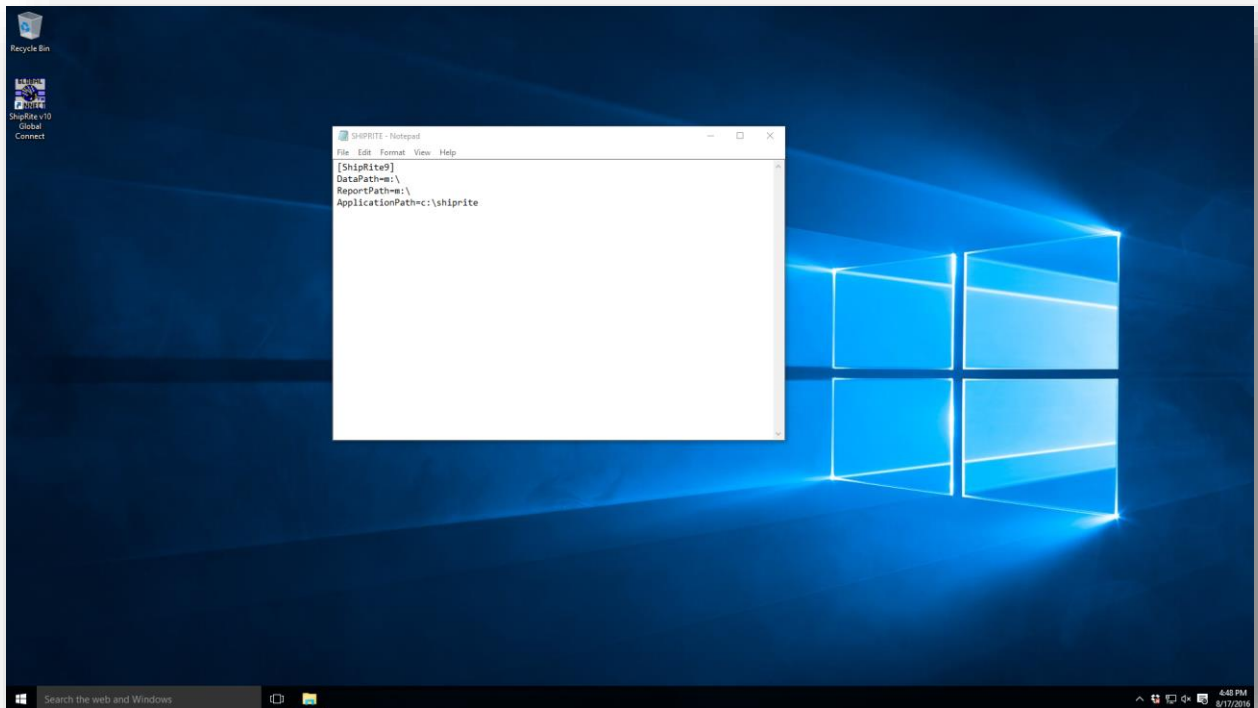
- Right-click on the *ShipRite* icon, and choose *Properties* from the sub-menu



- Change the *Target* path so that it reads: *m:\srpro.exe* (as seen in the above image)
- Click the *OK* button



- In the *Windows Search* field, type: *shiprite.ini*
- Select the file from the sub-menu once it appears



- Change the *DataPath* and *ReportPath* to use the *M:* network drive (as seen in the above image)
- Click *File > Save and Exit*