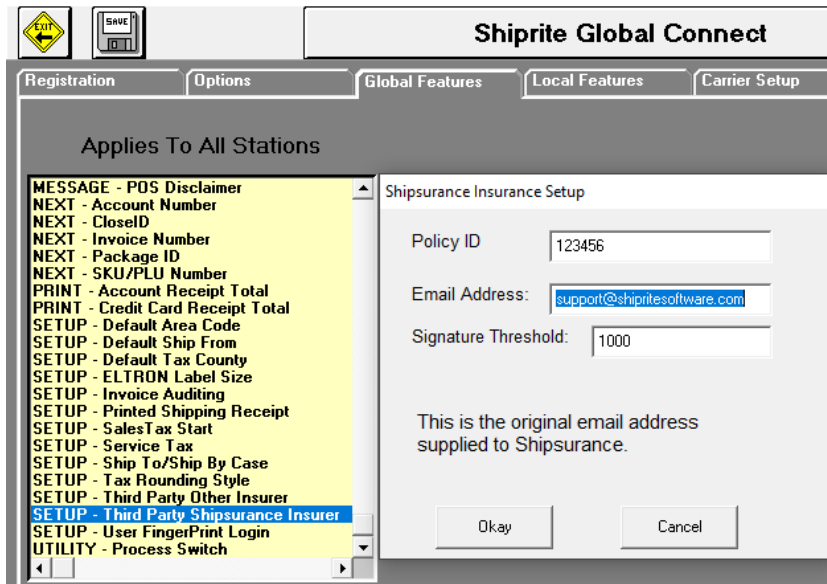


## Shipsurance Integration

Shipsurance is a shipping insurance company offering coverage for shipments sent via the major shipping carriers worldwide. The ShipRite integration with Shipsurance reports all insured shipments directly to Shipsurance. Visit [www.shipsurance.com](http://www.shipsurance.com) for more information and to setup an account.

### SETUP

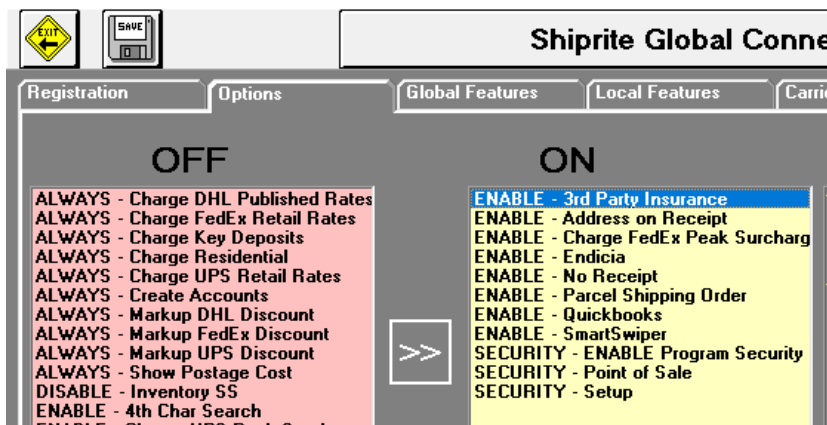
In ShipRite go to Setup > General Setup Options > Global Features > SETUP – Third Party Shipsurance Insurer.



Enter in the Shipsurance account number and the email address provided when setting up the account with Shipsurance.

The signature threshold is the insured value amount above which ShipRite will automatically add signature confirmation to the shipment being insured.

Next, click on the OPTIONS tab, select “ENABLE – 3<sup>rd</sup> Party Insurance” and turn that option ON. Click Save. Exit and restart the program for the changes to take effect.



## INSURING A SHIPMENT

Insuring a shipment with Shipment Insurance works exactly the same as insuring it with a carrier. In the SHIP screen, when processing a shipment, type in the amount for which to insure the shipment into the declared value field.



1 lb

W1 : Max 10 lb 0.1 oz / 0.01 lb  
W2 : Max 150 lb 0.5 oz / 0.05 lb

RES  
DIM 7

UTICA, NY  
UNITED STATES  
L+G=50 0.58cuft(1000cuin)

From:  
Shiprite Office 315-733-0036  
Mark Ford  
1926 Genesee St.  
Utica, Ny 13502

Contents:

**3rd Party INS ON**

Zip Code Dec Value

13502 400

Other

L 10 W 10 H 10

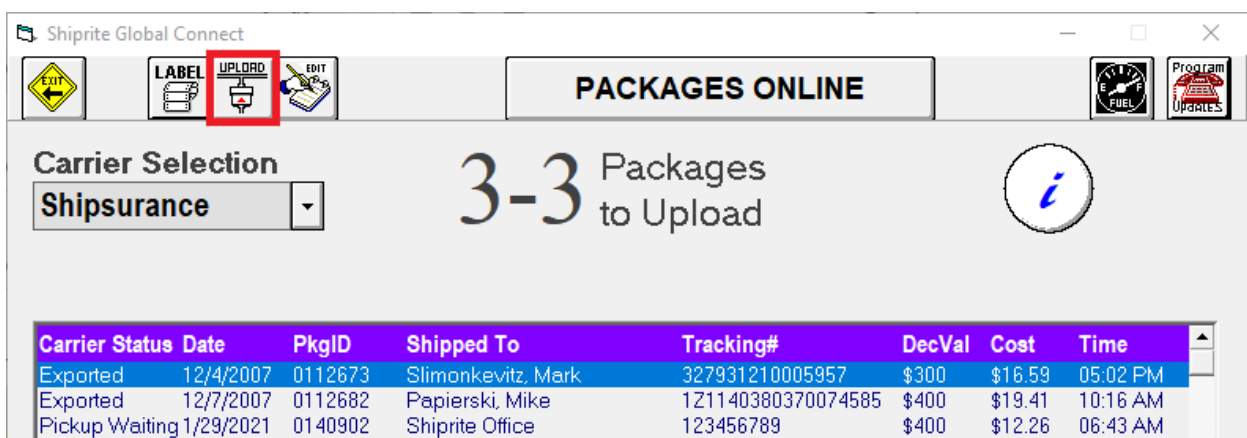
Additionally, make sure that the label above the Dec. Value field reads “3<sup>rd</sup> Party INS ON” to ensure that Shipment Insurance is enabled.

## REPORTING INSURED SHIPMENTS TO SHIPINSURANCE

Shipments are not automatically uploaded to Shipment Insurance when the label is processed.

At the end of the day, please go to the EOD screen and select “Shipment Insurance” from the Carrier Selection drop down menu.

All insured shipments will be displayed in the list. Please press the “UPLOAD” button on the top to send the shipment data to the Shipment Insurance server.



Shiprite Global Connect

EXIT LABEL **UPLOAD** EDIT

PACKAGES ONLINE

FUEL Program Updates

Carrier Selection  
Shipment Insurance

3-3 Packages to Upload

Carrier	Status	Date	PkgID	Shipped To	Tracking#	DecVal	Cost	Time
Exported	12/4/2007	0112673	Slimonkevitz, Mark	327931210005957	\$300	\$16.59	05:02 PM	
Exported	12/7/2007	0112682	Papierski, Mike	121140380370074585	\$400	\$19.41	10:16 AM	
Pickup Waiting	1/29/2021	0140902	Shiprite Office	123456789	\$400	\$12.26	06:43 AM	