



## ShipRite NEXT Update v10.26.12

**This is a Critical Update that must be installed by 6/1/2026.**

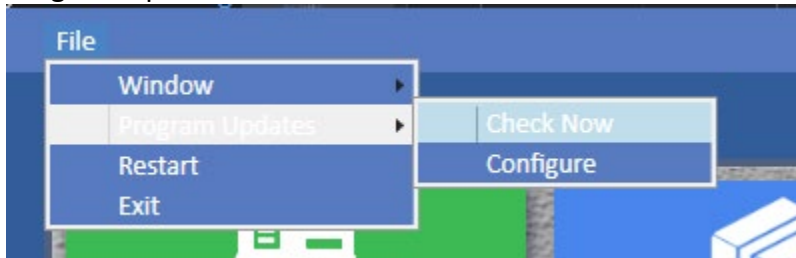
### Overview

- Time to Download: 25-40 seconds.
  - Time to apply update: 5 minutes.
  - It is recommended you download this at the end of day, and not as you arrive for work, unless you get to the center at least 1 hour ahead of time.
  - When first opening ShipRite, the top header should read **10.26.12.106**. If it does not, please re-download the update.
- 
- **UPS updated Drop Offs API URLs and Authentication**
  - Bug Fixes and other Enhancements

*Technical Support will be available Saturday 10am – 3pm EST.  
Monday – Friday 8am-8pm EST.*

## Installation

1. Backup your ShipRite database. You should be backing up DAILY. If you are not, from the main ShipRiteNext screen click on the Utilities option in the top right corner. Select Backup. Click the option to “Run Backup Now”.
2. The Update has to be done on the server computer with ShipRiteNext closed on all other workstations.
3. ShipRiteNext has automatic updates. When an update is released, a prompt will appear when starting up the program. Please follow the instructions on the screen to install.
4. If the update fails to install or you do not get a prompt, then please click on File > Program Updates > Check Now



5. It's possible that a firewall or anti-virus software blocks the Program Update from being downloaded. If that is the case you can download the update manually from this link:

Click [<<HERE>>](#) to manually download the update.

Run the downloaded update file and follow the prompts on the screen. Once the update is completed, start up the program.

6. Once ShipRite is updated and running on the server, it is safe to open ShipRite on your other workstations.

## Fixes Included in version 10.26.12

Click [<<HERE>>](#) to view the Changelog.